

A wide-angle photograph of a tropical beach at sunset. The sun is low on the horizon, casting a golden glow over the sky and the ocean. The sky is filled with dramatic, dark clouds that catch the light of the setting sun. The ocean waves are breaking gently on the shore, with white foam visible. The beach is made of fine, light-colored sand, and a series of footprints are visible, leading from the foreground towards the water. The overall mood is serene and contemplative.

PEOPLE MAKE PLANS

A FEATURE FILM INSPIRED BY TRUE EVENTS



FILM DETAILS

Genre: Dramedy, Family

Duration: 90 Minutes

Language: English

Location: Hawaii

Writer: Sheri Smith

Year: 2024

Rating: PG-13

Budget: Up To \$1 Million



LOGLINE

A woman in Hawaii weathers divorce after years of bullying and struggles to keep her castle-themed vacation rental business afloat when the lava starts to cut off her home/income. The real test of aloha is dealing with the failing health of her soulmate, her German Shepherd Dog and doing her "duty" to help him get to the rainbow bridge.

SYNOPSIS

SHELLY, 50s, recently divorced, is trying to start a new a life on The Big Island of Hawaii after being married for 25 years. Her ex-wingnut JOE, 50s, was a bully, but when he started to hit her, they split.

She and Joe built a house for their retirement which was constructed like a castle, complete with moat, drawbridge and dungeon, to attract tourists for a unique vacation rental. The locals were not amused.

Income isn't sufficient to stay afloat as life keeps throwing curveballs, yet she remains the "eternal optimist". She believes in the Law of Attraction, manifestation and studies Kabbalah to try to change things.

Joe hires a lawyer to try and get the castle back from Shelly. The lawyer is constantly in Shelly's face trying to get her to sign the castle over to Joe.

Ray is Shelly's beloved "heart dog", her German Shepherd, seven years old. She considers Ray the child she never had; they are connected at the hip. He starts to have health challenges, and keeps deteriorating despite pouring money into vet visits. She still remains positive that she can "fix" him and he can overcome it.

RACHEL, 20s, has just moved into the same subdivision and Shelly sees her younger self in Rachel. The two strike up a friendship but Shelly senses something is not quite right with her new friend. She discovers Rachel's husband is physically abusive.

REBECCA, 70s, is like an older sister to Shelly, a sage old woman who lives on the other side of the island on an old plantation that she inherited. Shelly introduces them so that Rebecca might impart her wisdom to Rachel.

Everything comes crashing in on Shelly when she must "do her duty" and put down her soulmate, her best friend, Ray, when there is no more quality of life. Then Rebecca passes away. As Shelly tries to cope with these two devastating losses, she manages to save Rachel from her husband after Rachel has had enough of his abuse.

Shelly offers Rachel to move into the castle and together they struggle down life's rocky path while enjoying paradise and island life, its uniqueness, and Hawaiian culture.

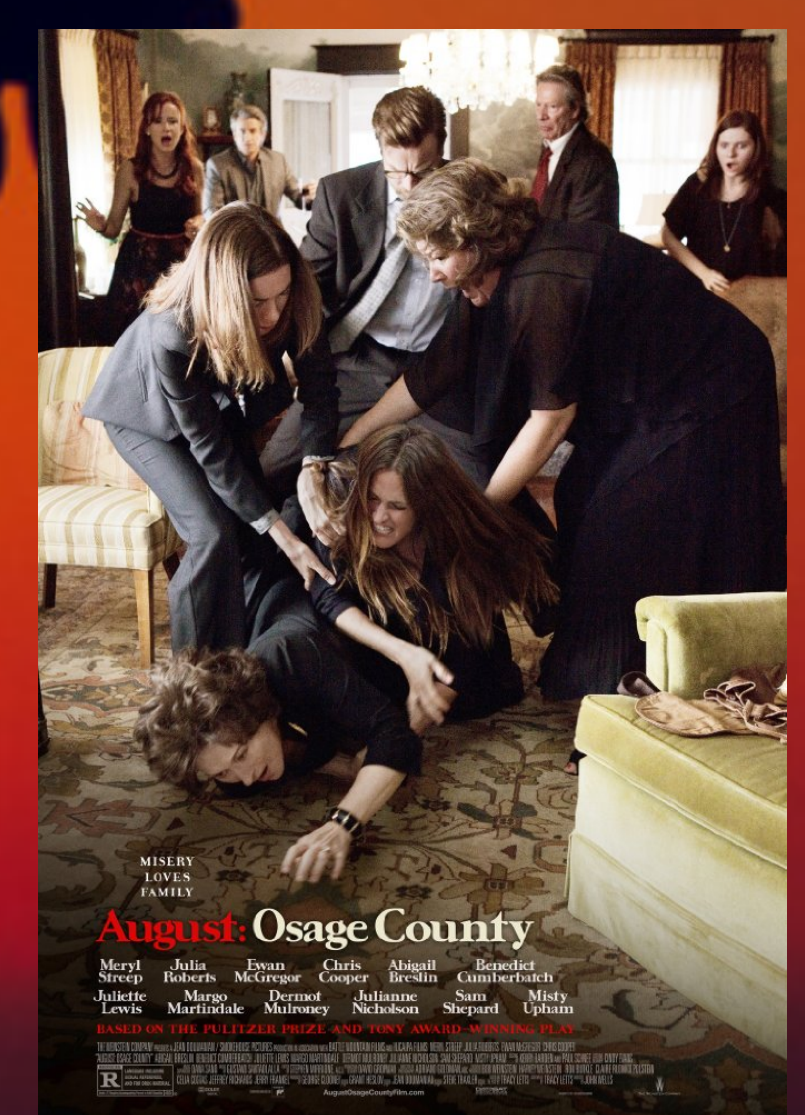
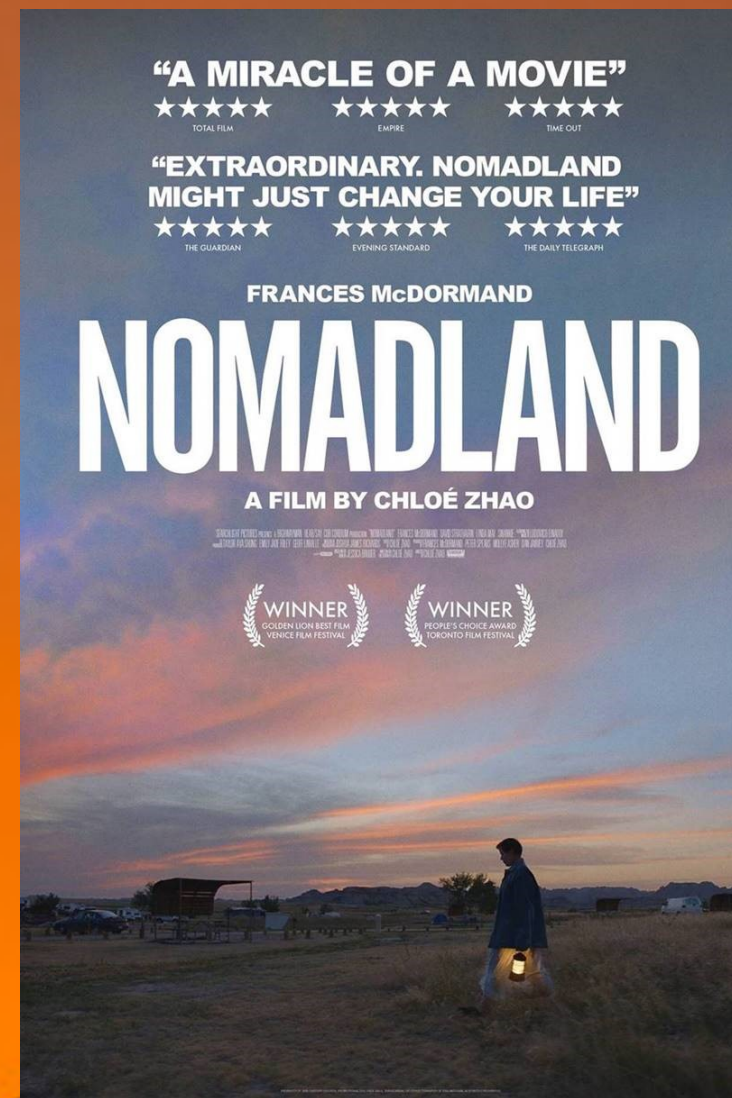
With mounting pressure from Joe's lawyer, who tells her she has twelve days to leave the castle or be forced out as Joe holds all the cards.

On the day of Rebecca's funeral, Shelly is gifted a present that may ultimately allow her to keep her castle. Rachel divorces her husband and discovers she is pregnant.

In the end, the family both Shelly and Rachel seek is right in front of them.



CREATIVE COMPARABLES





FADE IN:

INT. HOSPITAL CORRIDOR - DAY

RACHEL ROBINSON, late 20's, is screaming at the top of her lungs as she's pushed on a gurney through the hospital corridor by a nurse and a doctor.

From what we can see of her, she is a slim, beautiful young woman with dark, thick, curly hair about to give birth.

SHELLY SIMPSON, 50's, looks younger than her actual age, has long, brunette hair, no gray, wears mirrored sunglasses, trying her best to keep up with them.

SHELLY

Rachel, you got this! If you think you can or you think you can't - you're right!

Rachel is sweating like crazy, holding her belly.

RACHEL

I don't! Don't say that! No more Shelly-isms, please. Now I know why you never wanted to do this.

FREEZE FRAME OF RACHEL'S FACE IN AGONY

SHELLY (V.O.)

This beautiful, screaming woman is Rachel who you will see more of later. She's not usually this loud.

They push Rachel into a room, still screaming, and a nurse stops Shelly.

NURSE

I'm sorry Ma'am, I'm afraid you're not allowed past this point.

Shelly panting, puts her hands on her knees, trying to catch her breathe.

SHELLY

Ma'am? Really? But I'm...

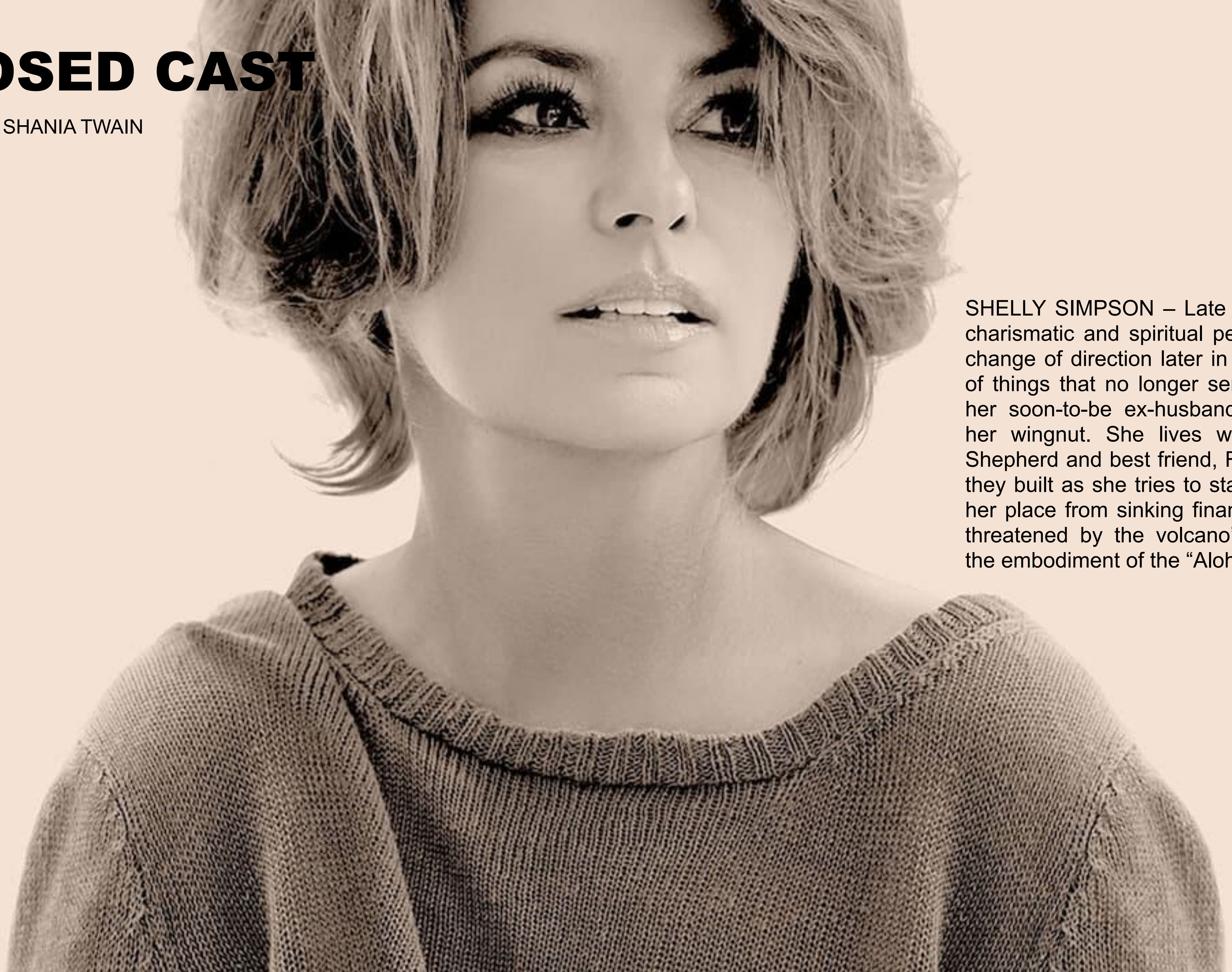
NURSE

She'll be fine.

The nurse is gone before Shelly can finish her sentence. Shelly nods to no one in particular.

PROPOSED CAST

PROPOSED CAST - SHANIA TWAIN



SHELLY SIMPSON – Late 50's, Shelly is a charismatic and spiritual person who has a change of direction later in life by letting go of things that no longer serve her, such as her soon-to-be ex-husband, she calls him her wingnut. She lives with her German Shepherd and best friend, Ray, in the castle they built as she tries to stay afloat keeping her place from sinking financially and being threatened by the volcano's wrath. She is the embodiment of the "Aloha" spirit.

PROPOSED CAST

SIMILIAR PROPOSED CAST FOR SHELLY SIMPSON

MARIA BELLO



PROPOSED CAST

PROPOSED CAST - AUBREY PLAZA



RACHEL ROBINSON – Late 20's, Rachel is a writer who feels stuck in Hawaii when she finds out her husband is cheating on her. She is befriended by Shelly who helps her find the strength to leave her husband. As the relationship develops, she and Shelly form a loving “ohana” (family) that affects Shelly's outlook in life.

PROPOSED CAST

SIMILAR PROPOSED CAST FOR RACHEL ROBINSON

A photograph of actress Kat Dennings. She has long, dark, wavy hair and is wearing a black, sleeveless, lace-trimmed dress. She is holding a black rotary telephone receiver to her ear with her right hand. The background is dark with horizontal blinds on the left side, through which some light is visible.

KAT DENNINGS

A portrait of actress Lola Kirke. She has long, wavy brown hair and is wearing a dark red, long-sleeved, wrap-style top. She is looking directly at the camera with a neutral expression. The background is a plain, light gray.

LOLA KIRKE

A portrait of actress Kaley Cuoco. She has long, blonde, wavy hair and is smiling broadly at the camera. She is wearing a white, off-the-shoulder top. The background is a solid, vibrant purple.

KALEY CUOCO

RAY

Ray is Shelly's seven year old, German Shepherd Dog. She spent her life savings purchasing and importing him from Germany to insure a "good" blood line, free of hip dysplasia. Ray is a brilliant dog and devoted to her. When Shelly and her wingnut separate, he is her only confidant and family.

He develops health condition. A once athletic dog who was trained in the sport of Schutzhund, he learned the basics of agility in one afternoon. He becomes Shelly's service animal so is able to travel back and forth from Hawaii to California.

He eats raw food, mostly sheep that is abundant in Hawaii. Shelly has become a butcher by necessity and goes to sheep eradication where she must field dress the animals to save money. As his condition progresses and his health challenges escalate, he remains tolerant and long-suffering.



EXT. - FRONT OF THE CASTLE

Shelly drives up to the castle. She sees JOE, late 50s, long gray, thinning hair, in a tie-dye t-shirt, looks as if he hasn't showered in weeks. Shelly turns off her car and sighs deeply.

SHELLY

Joe if you keep breaking the restraining order and you're going back to jail.

JOE

I've been honking. Who's the local who helps you? She's in there.

SHELLY

Bonnie.

JOE

Well, I know she's in there, I was calling for her to open the gate.

SHELLY

I told her not to let you in.

JOE

Anyway, you know why I'm here, Shelly.

Shelly steps out of her car and opens the back door for Ray. Ray jumps out and snarls at Joe, who takes a few steps back.

SHELLY

You remember Ray?

JOE

Yes, of course. C'mere boy.

Ray snarls again.

SHELLY

He clearly misses you.

Shelly walks away towards the gate of the castle.

JOE

Listen, I've come to take what's mine.

Shelly stops and turns around.

SHELLY

Yours? It is ours. We were married, remember? You messed up. Taking drugs, drinking and God knows what else. What happened to the good Mormon I married more than twenty years ago? The one I aspired to be like. The one who made me get baptized - again. Listen Joe, I took care of this house while you were in prison and made a vacation rental business. And now you just want it back?

JOE

Come on, I was the nicest husband.

SHELLY

Nice? Want me to show you some scars? Remember the bruises you used to give me? Of course I would want more of that, niceness.

JOE

Well, I had problems.

SHELLY

Oh, I know you had and I still stood by you like an idiot. That was MY problem and I fixed it. Go away Joe. Or Ray will make you.

Shelly looks at Ray.

SHELLY (CONT'D)

Isn't that right boy?

Ray growls at Joe louder.

JOE

You're crazy, the both of you.

Joe starts to walk away.

SHELLY

Goodbye Joe. Next time you show up I will call the cops.

JOE

I'm not done with you Shelly. This castle is mine and you know it. I have paperwork to prove it.

Shelly enters the gate, Ray follows, she closes it.

FILM TONE



CHARACTER TONE





LOCATION TONE



Actual Castle on the Big Island of Hawaii



EXT. DR. TANAKA'S OFFICE - DAY

Dr. Tanaka comes out of the little house that is her office with her assistant who carries a syringe.

Ray lies in the back seat of the Rav, Shelly is perched at the end of the seat, stroking his head. She whispers to him.

SHELLY

I belong to you, you belong to me,
you're my sweet...

DR. TANAKA

Ready?

SHELLY

Ready? Ready? Just
hurry, please.

Hurry. I don't want to melt
down in front of him. Hurry.

As the needle goes into his vein, she starts sobbing softly.

SHELLY (CONT'D)

(whispers in Ray's ear)
Stay with me. You're all I need.

The assistant walks away, tears welling, after the vet makes sure he has passed.

Shelly's sobbing grows into a wail, heard by the other workers in the office as the assistant opens the door and enters.

ABOUT THE AUTHOR

Sheri Smith started her career at the tender age of seven when she landed a starring role in a Broadway musical – with no previous singing, dancing or acting experience. “Here’s Love” was the adaptation of “Miracle on 34th Street” and Sheri (Sheri Bond at the time) won Natalie Wood’s part. Commercials, one of which was the longest-running, national M&M commercial (“melts in your mouth, not in your hand”), and soaps soon followed.

Smith worked (corporately) as the “gatekeeper” for Mark Canton at Warner Brothers as his administrative assistant and reader for films, Dick Robertson at Telepictures as administrative assistant and reader for films and TV, and Arthur Axelman, a packaging agent at William Morris as assistant and reader for TV movies. She was a production assistant or assistant to the producer for many indie producers – one (Tom Cole) led to a part in a pilot for one of the first reality shows ever - The Dream Thing.

Smith was encouraged by Dick Robertson to start her own company helping busy Hollywood Execs like himself. Smith called the company Executive Express, Your Personal Runaround. Executive Express was featured on the front page of the LA TIMES business section. Pam Dawber saw the article and liked the idea so much she developed and starred in a television “movie of the week” around Smith’s idea (This Wife for Hire).

Smith turned her entrepreneurial talents to marketing a catering and event production company. She grew the company to a three and a half million-dollar enterprise and catered to some of Hollywood’s elite (Mayor Riordan, Rock Hudson, Stefanie Powers and more). They catered to bands and shows for ten years as the exclusive backstage caterers for Irvine Meadows Amphitheatre in SoCal, feeding Michael Jackson and Bubbles, The Moody Blues and The Smiths among others.

After ten years of that grueling 24/7 commitment, Smith decided to move to Hawaii and build something for retirement (and fun!) – a unique, oceanfront vacation rental, a castle in Hawaii. It was here as she was immersed in Hawaiian culture, she was able to spend time pursuing her passion as an artist, writing screenplays.

CONTACT



Sheri Smith
info@PeopleMakePlans.com

www.PeopleMakePlans.com